

REV.	DESCRIPTION	DATE	DRAFTER	APPROVER
A1	DWG.REL	2020.6.02	ZHANG	JIN

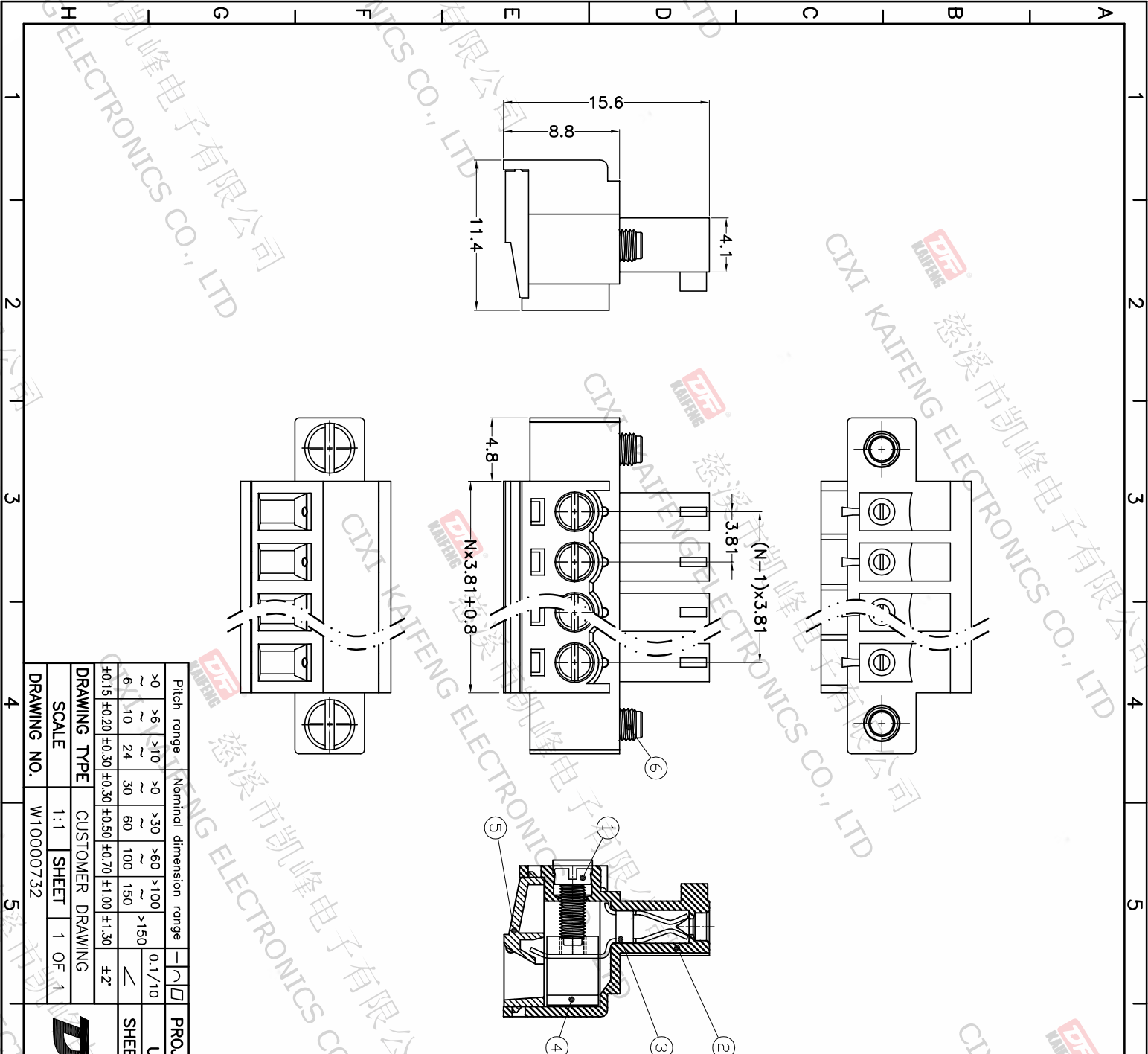
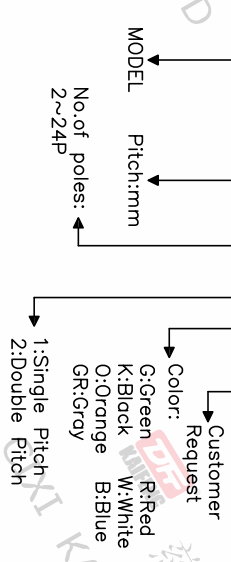
- Material
 - ①Screw : M2.0 steel,Zinc plated, *- slot type
 - ②Housing : PA66, UL94V-0
 - ③Contact : Copper alloy,Tin plated
 - ④Clamp : Copper alloy, Ni plated
 - ⑤Cover : PA66, UL94V-0
 - ⑥Screw : M2.5 steel,Zinc plated, *- slot type

- Electrical
 - UL IEC
 - Rated voltage : 300V 250V
 - Rated current : 8A 7A
 - Contact resistance : 20mΩ(Max)
 - Insulation resistance : 500MΩ/DC500V
 - Withstanding Voltage : AC1500V/1min
 - Wire range : 28-16AWG 0.5-1.5mm²

- Mechanical
 - Operating temperature: -40℃~+105℃
 - Soldering temperature:250℃±5/5sec
 - Torque: 0.2N.m (1.77Lb.in)
 - Strip length: 6-7mm

• RoHS compliance

HOW TO ORDER
KF2EDGM-Y-3.81-XXP-1 X-XXXXX



Pitch range	Nominal dimension range	PROJECTION	UNIT	TITLE
>0	>0	0.1/10	mm	KF2EDGM-Y-3.81-XXP-1X
~6	>10			
~10	~24			
±0.15	±0.20			
±0.30	±0.30			
±0.50	±0.50			
±0.70	±1.00			
±1.30	±1.30			

DFE 慈溪市凯峰电子有限公司
CIXI KAIFENG ELECTRONICS CO.,LTD

DRAWING TYPE: CUSTOMER DRAWING
SCALE: 1:1 SHEET: 1 OF 1
DRAWING NO.: W10000732