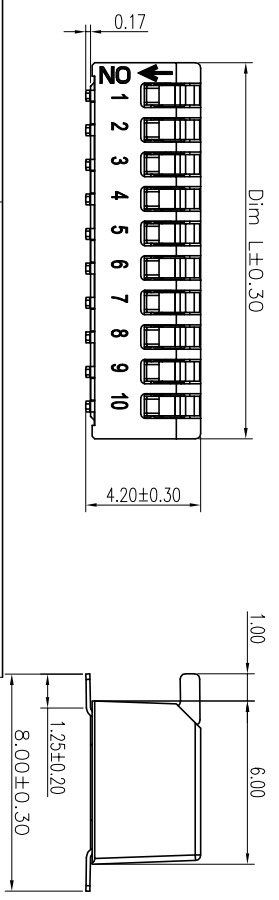
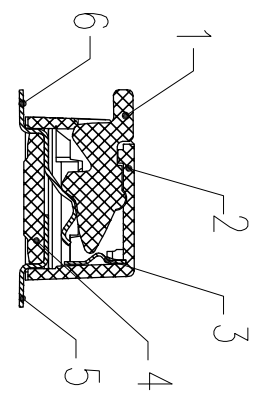
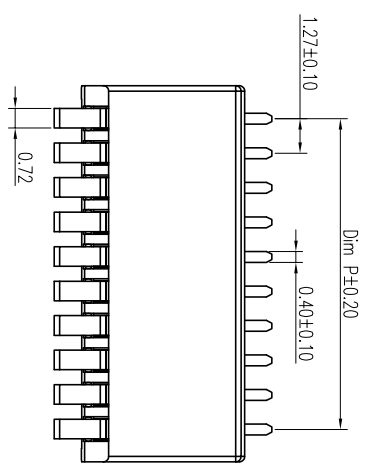
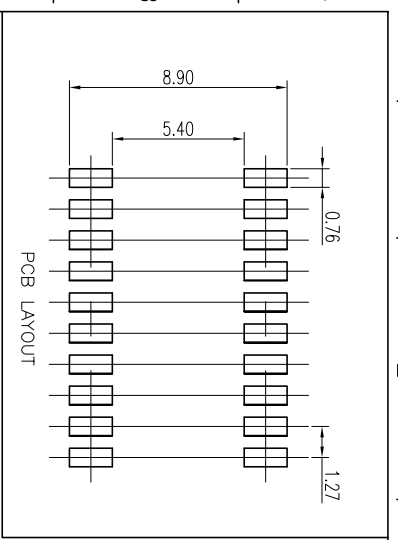


REV	ECN	CONTENT	CHECK	DATE
V0.0		ORIGINAL	ZY	2019.10.11
V1.0		整理图纸	XCN	2020.06.05

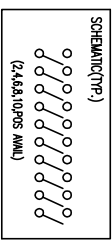


- 技术要求:
- 额定电流: 25mA, 24VDC (开与关切换时) 100mA, 50VDC (开与关不切换时)
  - 接触阻抗:  $\leq 100m\Omega$  (初始),  $\leq 200m\Omega$  (寿命测试后)
  - 绝缘电阻:  $\geq 100M\Omega / 100VDC$
  - 耐电压: 300VAC/1mi nute
  - 拨动力: 800g max
  - 机械寿命:  $\geq 1000$  cycles
  - 使用温度:  $-40^{\circ}C \sim +85^{\circ}C$
  - 存储温度:  $-40^{\circ}C \sim +85^{\circ}C$
  - 符合ROHS要求
- 焊接说明:
- 回流焊: 240°C, 20S max, 峰值温度260°C, 手工焊接: 30W电烙铁, 320±5°C, 3S max 焊接前保持开关在“OFF”状态

6	B针	\	N	铜合金	镀金
5	A针	\	N	铜合金	镀金
4	底座	\	1	工程塑料	UL 94V-0
3	弹片	\	1	不锈钢	\
2	外壳	\	1	工程塑料	UL 94V-0
1	拨柄	\	N	工程塑料	UL 94V-0

APP.	DATE	NAME	KF1038B-XXP-XX-XXXX				
CHK.	DATE						
DWG.	DATE						
UNITS	MM	SCALE	1:1	SHEET	1/1	PROJECTION-METHOD	☉

编码规则  
 KF1038 B - XXP - XX - XXXXX  
 产品型号 B: SMD Type P数  
 00: 管装  
 TR: 载带包装  
 客户需求



General tolerance in mm		radii and chamfers		shorter angle side		=		//	
over	to	over	to	over	to	over	to	over	to
0.5	3	0.5	3	10	10	0	0	100	100
3	6	3	6	50	50	all	all	150	150
±0.15	±0.2	±0.25	±0.3	±0.5	±0.8	±1.0	±1.0	±0.5	±0.5

**DF** 慈溪市凯峰电子有限公司  
 CIXI KAIFENG ELECTRONICS CO., LTD